

CSUDH | COLLEGE OF BUSINESS
ADMINISTRATION & PUBLIC POLICY

Bachelor of Science in Public Administration

2024-2025 catalog year



About CBAPP

Established in 1973, the College of Business Administration and Public Policy (CBAPP) is a productive and professional environment of excellence in academic programs and scholarly activity. Undergraduate and graduate programs in Business Administration, Public Administration, Criminal Justice Administration, and Organizational Leadership Studies are led by five academic departments and the School of Public Service and Justice consisting of scholarly tenured, tenure-track faculty and lecturers. Our programs have been granted regional accreditation by WASC, business programs accreditation by AACSB, and public administration accreditation by NASPAA. CBAPP has the second largest enrollment of the professional schools at CSUDH, and more than 20% of CSUDH degree recipients are CBAPP students. Criminal Justice Administration and the MPA Public Management programs are ranked in the top 5 undergraduate and graduate programs at CSUDH. Faculty, staff, students and Advisory Board members contribute to the continuous success and growth of the College on-campus and in the community. CSUDH has ranked 1st in the nation for Social Mobility Index (SMI).

School of Public Service and Justice

The School of Public Service and Justice (SPSJ) addresses a critical need for promoting an understanding of the role of government and how to assure ethics in public service. SPSJ examines social, legal, and policy issues through cutting-edge empirical research, undergraduate and graduate education, and community service. It also offers ongoing symposia and events on issues such as systemic racism and public sector ethics, via the Public Policy Institute (PPI), the Social Justice Distinguished Speaker Series, the South Bay Economic institute, and the Pi Alpha Alpha honor society. Ongoing societal challenges such as racial equality in the criminal justice system and other areas of government, poverty, and homelessness highlight the importance of renewing our focus on ethical public service and justice. SPSJ faculty are leaders in their fields who educate our students

Department of Public Administration

Dr. Elena Kulikov, Department Chair

Director of the School of Public Service and Justice

Dr. Fynnwin Prager



Student Engagement

Congressional Internship Program

Each fall, the Panetta Institute hosts students for its Congressional Internship Program beginning in mid-August with an intensive two-week course at the Institute and continuing in Washington, D.C. through mid-November. Interns are nominated by the presidents of the twenty-three CSU campuses.

Pi Alpha Alpha

Pi Alpha Alpha (PAA) is the national honor society formed to recognize and promote excellence in the study and practice of public policy and administration. Pi Alpha Alpha seeks to promote the advancement of quality in the education and practice of the art and science of public policy.

Public Policy Institute

The PPI develops programs to instill interaction and exchange of ideas, teaching, and scholarship among scholars, researchers, students, public administration, and non-profit professionals. The PPI facilitates student engagement at the undergraduate and MPA levels in public administration and non-profit projects through its internships, mentors, symposiums, and community outreach programs. It provides opportunities for faculty development while serving as a feasible research resource.

South Bay Economic Institute

The Economics Institute at CSUDH aims to lead the South Bay region with innovative and forward-thinking economics education and research. The Economics Institute serves the College of Business Administration and Public Policy faculty and students, as well as community stakeholders

UCLA Anderson Research Fellows

Through a collaboration between CSUDH and UCLA Anderson Forecast, CSUDH undergraduates with an interest in economics will be the exclusive recipients of the UCLA Anderson Forecast Fellows program.





CBAPP Student Success Center Public Administration Advisement

CBAPP Student Success Center Contact Information

Phone: (310) 243-3548

Office: II 1100 & 3400

Email: cbappundergrad@csudh.edu

ABOUT ADVISEMENT

The College of Business Administration and Public Policy's Student Success Center provides authoritative information concerning student advisement, concentration information, graduation requirements, transfer credit, and special circumstances and conditions.

Each semester before registration, all students are encouraged to come to the Center for advisement. Students should visit the center for course approvals when adding business administration courses during the add/drop period.

Students wishing to receive credit in the Public Administration major or minor for courses taken at other institutions, must receive approval from an adviser in the Center. The Center maintains records of progress towards completion of business administration degree requirements for all students. These records are used for counseling purposes and to check completion of course prerequisites.

Concentration and career advising are provided by the faculty and can be initiated by students to accommodate individual needs. Faculty contact information is available in the Center and on our website. Students should seek advice from an appropriate department chair regarding concentration course work. Students may obtain advice from faculty about tailoring their academic programs toward career goals, about graduate schools and programs, and about career opportunities.



Daryl Evans
Graduation Specialist
Email: devans@csudh.edu



Salvador Valdez
Graduation Specialist
Email: svaldez@csudh.edu



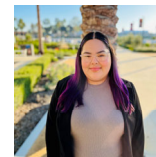
Ineki Osunde
Retention Specialist
Email: ifike@csudh.edu



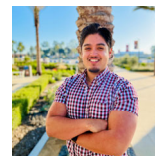
Michelle Alfaro
Academic Advisor
Email: malfaro@csudh.edu



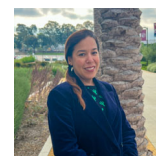
Jesus Rosas
Academic Advisor
Email: jrosas50@csudh.edu



Edith Estrada
Academic Advisor
Email: eestrada51@csudh.edu



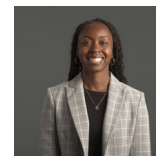
Anthony Acosta
Academic Advisor
Email: aacosta75@csudh.edu



Lucia Monzon
Academic Advisor
Email: lmonzon@csudh.edu



Tanya Cook
Internship Advisor
Email: tcCook@csudh.edu



Kendra Dixon
Admin. Support Coordinator
Email: kdixon@csudh.edu



Stephanie Gonsalves
Director
Email: sflores@csudh.edu

Need an Advisor? Schedule an appointment online.

<https://csudh.campus.eab.com>

Need a Permission Number to enroll in a class?

Criminal Justice students can email: cjapubpn@csudh.edu

(Include: Full Name, Student ID, Major, Course, and Section #)

Example: Teddy Toro, Campus ID: 777777777, Business Administration, BUS 445 Section 40



Public Administration

Program Features

The Bachelor of Science in Public Administration is designed to provide professional preparation for administrative or managerial positions in public service organizations. The degree program requires: 1) completion of a set of core courses common to all public administration students; 2) any one concentration.

In addition to full-time faculty, the department has part-time faculty who are practicing public managers in their areas of specialization. Several of the full-time faculty also have lengthy careers as public managers. To complement the traditional classroom instruction, the Department of Public Administration and Public Policy offers a number of activities that enhance the total educational experience of students. The department and the Public Policy Institute sponsors speakers and professional symposia.

Concentrations

- Public Management
- Criminal Justice Administration
- Health Services Administration

Course Requirements for the Bachelor's

See the "Requirements for the Bachelor's Degree" in the University Catalog for complete details on general degree requirements. A minimum of 40 units, including those required for the major, must be upper division.

Elective Requirements

Completion of elective courses (beyond the requirements listed below) to reach a minimum total of 120.

General Education Requirements (49 units)

See the "General Education" requirements in the University Catalog and the Class Schedule for the most current information on General Education requirements and course offerings.

United States History, Constitution and American Ideals Requirement (6 units)

See the "United States History, Constitution, and American Ideals" requirements in the University Catalog. Courses used to satisfy this requirement do not apply to General Education.

GWAR Requirement

See the "Graduation Writing Assessment Requirement" in the University Catalog. CJA 339 will clear GWAR for Public Administration majors.

Minor Requirements

Single field major, no minor required.

Major Requirements (48 units)

Students must complete lower and upper division core courses, a concentration, and electives.

Career Possibilities

The job opportunities for students in public administration are as diverse as the range of services provided by governments in the United States. In addition, the program provides employment preparation for: nonprofit organizations and some private sector firms. The degree also provides a strong base for those pursuing a career in law.

General Education Requirements

For a list of courses that clear general education, please visit your Academic Requirements Report or the CSUDH catalog: <https://catalog.csudh.edu/general-education/general-education-requirements/>

AREA A. ENGLISH LANGUAGE COMMUNICATION AND CRITICAL THINKING (9 UNITS REQUIRED)

- A1. Oral Communication (3 units) Completed with a "C-" or better.
- A2. Written Communication (3 units) Completed with a "C-" or better.
- A3. Logical/Critical Reasoning (3 units) Completed with a "C-" or better.

AREA B. SCIENTIFIC INQUIRY AND QUANTITATIVE REASONING (13 UNITS REQUIRED)

- B1. Physical Science (3 units)
- B2. Natural Science in Life Science (3 units)
- B3. Natural Science in Science Laboratory (1 unit)
- B4. Quantitative Reasoning and Problem Solving (3 units) Completed with a "C-" or better.
- B5. Integrative Studies in Natural Science (3 units)

AREA C. ARTS AND HUMANITIES (12 UNITS REQUIRED)

- C1. Arts Courses (3-6 units)
- C2. Letters Courses (3-6 units)
- C3. Integrative Studies in the Humanities (3 units)

AREA D. AREA OF THE SOCIAL SCIENCES (9 UNITS REQUIRED)

- D1. Perspectives on Individuals, Groups and Society (3 units)
- D2. Global and Historical Perspectives (3 units)
- D3. Integrative Studies in the Social Sciences (3 units)

AREA E. LIFELONG LARNING AND SELF-DEVELOPMENT (3 UNITS)

- E. Lifelong Learning and Self-Development (3 units)

AREA F. ETHNIC STUDIES (3 UNITS)

- F. Ethnic Studies (3 units)

STATUTORY REQUIREMENTS (6 UNITS)

- HIS 101 History of the United States (3 units)
- POL 101 American Institutions (3 units)

GRADUATION WRITING ASSESSMENT REQUIREMENT

- CJA 339 Research Methods and Communication in Criminal Justice Administration (3 units)

QR code :

General Education courses via university catalog



PUBLIC ADMINISTRATION MAJOR REQUIREMENTS (48 UNITS)

A. LOWER DIVISION REQUIRED COURSES (6 UNITS)

CIS 270	Information Systems & Technology Fundamentals (3)	
MAT 105 OR	Finite Mathematics (3)	⇒ MAT 105 OR
MAT 131 OR	Elementary Statistics and Probability (3)	⇒ MAT 131 OR
MAT 132 OR	Elementary Statistics & Probability with Algebra	⇒ MAT 132

B. UPPER DIVISION CORE REQUIRED COURSES (30 UNITS)

BUS 300 OR	Business Communications (3)	⇒ BUS 300 OR
BUS 301	Employment communications (1)	⇒ BUS 301, 302, and 303 must be taken concurrently.
BUS 302	Written Communications (1)	
BUS 303	Oral Communications (1)	
PUB 300	Foundations of Public Administration (3)	⇒ MAT 131 prerequisite
PUB 301	Administrative Leadership and Behavior (3)	
PUB 302	Administration of Financial Resources (3)	
PUB 303	Public Personnel Administration	
PUB 304	Administration of Public Policy (3)	
PUB 305 Or CJA 341	Applied Statistics in Public Policy (3) Statistics in Criminal Justice Administration (3)	
PUB 306 Or CJA 339	Research Methods in Public Administration (3) Research Methods and Communication in Criminal Justice Administration (3)	
PUB 307	Public Sector Ethics (3)	
PUB 490	Senior Seminar in Public Administration (3)	

PUBLIC MANAGEMENT

A. REQUIRED COURSES (6 UNITS):

PUB 324 Analytics Decision-Making (3)

PUB 329 Local Government Administration (3)

B. SELECT TWO OF THE FOLLOWING (6 UNITS):

PUB 401 Economics for Public Service (3)

PUB 426 Intergovernmental Relations and Grant-Writing (3)

PUB 434 Administrative Planning (3)

All three concentrations provide specialized career-focused training in important areas of public administration. With these skills you will be able to seek employment across many government and non-profit organizations, and specialize in critical areas.

The knowledge gained and skills learned in the **Administrative Management concentration** are relevant in a wide variety of public organization positions and also transfer well to the private sector. Potential job titles in administrative management included: office manager, administrative professional, administrative support specialist, administrative manager, corporate administrator facilities operations manager. These positions offer high pay and great job security, and Bureau of Labor Statistics projects jobs in these fields will grow.



CRIMINAL JUSTICE ADMINISTRATION

A. REQUIRED COURSES (12 UNITS):

PUB 324 Analytic Decision-Making (3)

CJA 340 Criminal Justice and Community (3)

CJA 342 Legal and Ethical Found. Of Justice in CJA (3)

CJA 300-level Select one CJA 300-level or CJA 400-Level course

CJA 400-level

If you're looking for employment that offers job security while allowing you to make a difference to local communities, consider our **Criminal Justice Administration concentration**. The criminal justice system is responsible for law enforcement through trying, processing, and rehabilitating criminals. Usually these are government agencies, so learning about public administration before entering these fields is critical. Police officers, detectives, correctional and probation specialists will always be in high demand nationwide along with the various administrative support positions. Each path has different training requirements, but all lead to an exciting career in criminal justice.

HEALTH SERVICES ADMINISTRATION

A. REQUIRED COURSES (12 UNITS):

PUB 324	Analytic Decision-Making (3)
PUB 371	Introduction to Health Services Administration (3)
PUB 373	Health Policy (3)
PUB 426	Intergovernmental Relations and Grant-Writing (3)



Why should I major or minor in Public Administration (PUB)?

With this degree you can:

Make a difference!

- Tackle challenging real-world issues across society.
- Use your talent to find new solutions to pressing problems.

Serve your local community!

- Jobs in government and non-profits serve the public.
- Engage in service-learning projects in PUB classes.

Get a secure and well-paying job!

- Government agencies employ millions at the federal, state, county and city levels.
- Non-profit organizations tackle societal problems around the country

Health Services Administration concentration. As a health services administrator, you'll be responsible for the overall business management of health care facilities such as hospitals or nursing homes. Whether you're responsible for an entire facility or just a specific department, you'll create and implement policies and procedures, hire and supervise staff, control finances, order supplies, and coordinate your plans and activities with other health care administrators.

Health care organizations are often non-profits or government-run, so public administration is a great degree to hone your health care administration skills. Health care remains a top employer in the South Bay Los Angeles region around CSU Dominguez Hills. Employment in healthcare administration is expected to increase nationwide by 28% between 2021 and 2031. This is due in large part to the growing elderly population, which is increasing the need for all types of healthcare services. Demand is highest for experienced candidates who are willing to relocate to shortage areas.

Public Administration has an excellent Master's program that is NASPAA-accredited – the global standard for public affairs education.

Our faculty are leaders in their fields and create a supportive environment for you to thrive in your studies and future careers.



**CALIFORNIA STATE UNIVERSITY, DOMINGUEZ HILLS
PUBLIC ADMINISTRATION MAJORS
LOWER DIVISION REQUIRED COURSES
LOCAL COMMUNITY COLLEGE EQUIVALENCIES**

COMMUNITY COLLEGE / YEAR	MATH 105	MATH 131	CIS 270
Cerritos 2023/24	MATH 115	MATH 112	CIS 101
Compton 2023/24	MATH 140	MATH 150	CIS 113 or CIS 102
Cypress 2023/24	MATH 115 C	MATH 120C	CIS 111 C
East LA 2023/24	MATH 235	MATH 227	CIS 101 or CAOT 035
El Camino 2023/24	MATH 140	MATH 150	CIS 13
Fullerton 2023/24	NONE	MATH 120F, or 120FH or 121F	CIS 111 F, or HF
Glendale 2023/24	MATH 133	MATH 136, 136+, 136H	CS 101, or IS 101
Golden West 2023/24	NONE	MATH G160	CS G130
Long Beach City 2023/24	MATH 37,	STAT 1, or 1H	COSA 50, or COSA 30
LA City 2023/24	NONE	MATH 227, 227S	CIS 101
LA Harbor 2023/24	NONE	MATH 227, 227S	CIS 101
LA Mission 2023/24	NONE	MATH 227, 227S	CS 101 or CIS 101
LA Pierce 2023/24	NONE	MATH 227, or MATH 228B	CIS 101 or CAOT 082
LA Southwest 2023/24	MATH 235	MATH 227, 227S	CIS 101
LA Trade Tech 2023/24	MATH 235	MATH 227, or 227S	CIS 104, CAOT 035, or CIS 101
Mount San Antonio 2023/24	MATH 120	MATH 110, or 110H	CISB 11
Orange Coast 2023/24	MATH A155	MATH A160	CIS A111
Pasadena 2023/24	BUS 014A	STAT 50, 50H or STAT 18	CIS 10 or BIT 025
Rio Hondo 2023/24	NONE	MATH 130, 130H	CIT 101
Saddleback 2023/24	NONE	MATH 10	CIM 1
Santa Ana 2023/24	MATH 145	MATH 219, or 219H, 221	CMPR 100 or BUS 150
Santa Monica 2023/24	MATH 21	MATH 54	CIS 4
Santiago Canyon 2023/24	NONE	MATH 219, or 219H, 220	CMPR 100
West LA 2023/24	MATH 235	MATH 227, 227S	CIS 101

*If your school or articulation year is not listed, please visit www.assist.org

*If you have taken a statistics course not shown or an equivalent to MAT 132 at CSUDH, please email your academic advisor to request a substitution towards MAT 131

*For an evaluation of the equivalency of a course taken at a college not listed on assist.org, please submit a letter to the Department Chair requesting an assessment of equivalency with a course description from that school's catalog attached.

Transfer Student (Part Time Plan)		
Semester	Requirement Description	Units
*Summer	CIS 270 (if needed)	3
*Summer	LD CJA MATH (if needed)	3
1st Sem	PUB 300	3
1st Sem	GE UD Natural Science	3
2nd Sem	PUB 301	3
2nd Sem	GE UD Humanities	3
3rd Sem	BUS 300 or BUS 301, 302, & 303	3
3rd Sem	PUB 302	3
4th Sem	PUB 306 OR CJA 339	3
4th Sem	GWAR (CJA 339 or ENG 350)	3
4th Sem	PUB 307	3
5th Sem	PUB 303	3
5th Sem	PUB 304	3
6th Sem	PUB 305 OR CJA 341	3
6th Sem	GE UD Social Science	3
7th Sem	Concentration 1	3
7th Sem	Concentration 2	3
8th Sem	Concentration 3	3
8th Sem	Concentration 4	3
9th Sem	PUB 490	3
9th Sem	Elective to reach 120 units	3

Transfer (Full Time Plan)		
Semester	Requirement Description	Units
*Summer	CIS 270 (if needed)	3
*Summer	LD CJA MATH (if needed)	3
1st Sem	PUB 300	3
1st Sem	GE UD Natural Science	3
1st Sem	PUB 301	3
1st Sem	GE UD Humanities	3
2nd Sem	BUS 300 or BUS 301, 302, & 303	3
2nd Sem	PUB 302	3
2nd Sem	PUB 306 OR CJA 339	3
2nd Sem	GWAR (CJA 339 or ENG 350)	3
2nd Sem	PUB 307	3
2nd Sem	PUB 303	3
3rd Sem	PUB 304	3
3rd Sem	PUB 305 OR CJA 341	3
3rd Sem	GE UD Social Science	3
3rd Sem	Concentration 1	3
3rd Sem	Concentration 2	3
4th Sem	Concentration 3	3
4th Sem	Concentration 4	3
4th Sem	PUB 490	3
4th Sem	Elective to reach 120 units	3

Freshmen - 4 year plan (Semesters 1-4)		
Semester	Requirement Description	Units
1st Sem	ENG Freshman Composition	3
1st Sem	MAT 105, 131, 132, or 195	3 or 4
1st Sem	Humanities - Arts Course (GE -Area C1)	3
1st Sem	Social Sciences-Perspectives Individuals Groups and Society (GE - Area D)	3
1st Sem	GE Lifelong Learning and Self Development (Area E)	3
2nd Sem	HIS 101	3
2nd Sem	GE Life Science (Area B2)	3
2nd Sem	Humanities - Additional Arts or Letters Course (GE - Area C1 or C2)	3
2nd Sem	Social Sciences - Global and Historical Perspectives (GE - Area D)	3
2nd Sem	Humanities - Letters Course (GE - Area C2)	3
3rd Sem	Oral Communication (GE)	3
3rd Sem	Physical Science (GE - Area B1)	3
3rd Sem	Science Laboratory (GE - Area B3)	1
3rd Sem	Ethnic Studies (GE-Area F)	3
3rd Sem	Logical/Critical Reasoning (GE)	3
3rd Sem	Elective to meet 120 units	3
4th Sem	POL 101	3
4th Sem	CIS 270	3
4th Sem	PUB 300	3
4th Sem	GE UD Natural Science	3
4th Sem	PUB 301	3

Freshmen - 4 year plan (Semesters 5-6)		
Semester	Requirement Description	Units
5th Sem	Elective to reach 120 units	3
5th Sem	Elective to reach 120 units	3
5th Sem	Elective to reach 120 units	3
5th Sem	GE UD Humanities	3
5th Sem	BUS 300 or BUS 301, 302, & 303	3
6th Sem	PUB 302	3
6th Sem	PUB 306 OR CJA 339	3
6th Sem	GWAR (CJA 339 or ENG 350)	3
6th Sem	PUB 307	3
6th Sem	PUB 303	3
7th Sem	PUB 304	3
7th Sem	PUB 305 OR CJA 341	3
7th Sem	GE UD Social Science	3
7th Sem	Concentration 1	3
7th Sem	Concentration 2	3
8th Sem	Concentration 3	3
8th Sem	Concentration 4	3
8th Sem	PUB 490	3
8th Sem	Elective to reach 120 units	3
8th Sem	Elective to reach 120 units	3

