

Campus Budget Update

August 19, 2020

CSUDH

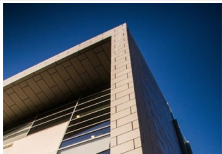
DIRECTORY

CSUDH

CALIFORNIA STATE UNIVERSITY
DOMINGUEZ HILLS

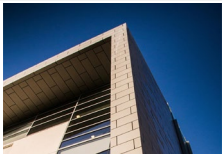
Previous Campus Budget Update

- The previous Campus Budget Update from July 27th is available on the Budget Office website, along with answers to questions asked in the chat and google form
- <https://www.csudh.edu/budget-plan-admin/budget-presentation/>

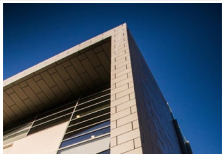


Agenda

- I. Review of Assumptions
- II. Campus Budget Update Review
- III. CARES Act

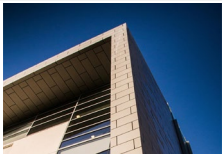


REVIEW OF ASSUMPTIONS

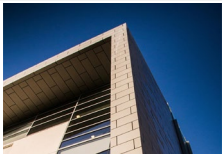


2020-21 Assumptions Guiding Budget Modeling

- Protecting the health and safety of the campus community at all costs
- Maintaining the integrity of the academic enterprise
- Attending to essential support services and co-curricular learning opportunities
- Prioritizing the prudent use of available resources, hoping to minimize and/or eliminate the possibility of layoffs or furloughs for staff and faculty (although those possibilities have been a definite consideration)
- Being cognizant of the fact that as we distinguish between one-time and recurring cuts, this budget crisis will likely continue for three years

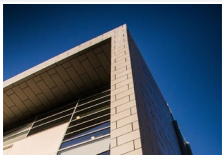
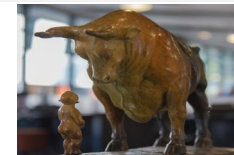


CAMPUS BUDGET UPDATE REVIEW



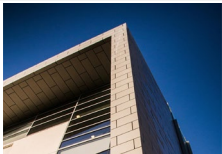
2020-21 Base Budget Reduction

- The State of California is anticipating a \$54.3B decrease in revenues in 20-21. The enacted state budget reflects decreased allocations to close that gap.
- The CSU will see a \$299M decrease in recurring General Fund Appropriation from the State, and \$24.2M in tuition loss, for a total CSU budget reduction of \$323.2M.
- The Dominguez Hills portion of the permanent base budget reduction is **\$7,520,852**, with an expectation to maintain the same enrollment targets



2020-21 Base Budget Reduction

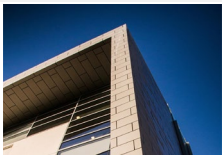
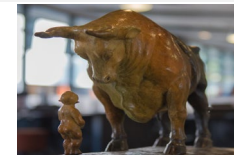
- Dominguez Hills has an additional \$2.4M in unfunded mandatory costs and priorities for a total campus base shortfall of **\$9.9M**.
 - This shortfall is permanent and will be reflected in the base budget in future years
- Additionally, there have been approximately **\$15M** in one-time expenses that have been identified in 2020-21
 - Some of these expenses may be recurring over several years, but are not permanent



Final Base Budget Distribution

- Deficit and solution amounts are subject to change as strategies are finalized
- These are summaries of the strategies, and will be examined further at future budget webinars/Lunch & Learns

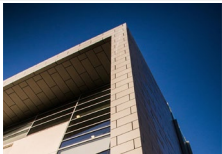
Starting Deficit	\$ (9,899,643)
Less Stoplight Chart	\$ 5,320,530
<i>Adjusted 20/21 Base Deficit</i>	<i>\$ (4,579,113)</i>



Final Base Budget Distribution

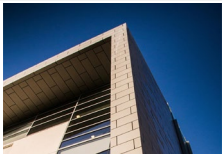
- Each Division will be responsible for identifying their remaining reduction

Academic Affairs	63,139,168	63,139,168	(287,620)	62,851,548	(2,037,759)	60,813,789
Admin and Finance	15,434,472	15,434,472	(766,568)	14,667,904	(475,559)	14,192,344
Univ. Advancement	3,102,632	3,102,632	(50,004)	3,052,628	(98,972)	2,953,656
Centrally Monitored	94,185,272	96,703,463	(3,170,505)	93,532,959	(1,200,000)	92,332,959
Info. Technology	10,139,856	10,139,856	(567,006)	9,572,850	(310,369)	9,262,481
President	3,181,934	3,181,934	(65,004)	3,116,930	(101,056)	3,015,873
Student Affairs	11,375,536	11,375,536	(413,823)	10,961,713	(355,398)	10,606,315
TOTAL	200,558,869	203,077,060	(5,320,530)	197,756,530	(4,579,113)	193,177,417



Solutions Implemented

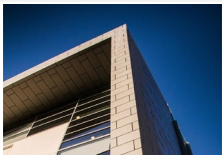
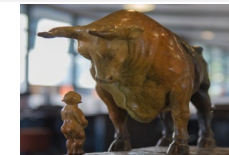
- CSUDH has implemented several solutions to reduce the campus deficit:
 - Eliminating \$5.3M in vacant positions (Stoplight Review Model) (Base)
 - Sweeping budgets associated with travel and memberships (1x)
 - Reducing temporary and student hires (1x)
 - Utilize 50% of one-time reserve (1x)
 - Leverage CARES Act Funding (1x)
 - Leverage All-Funds Budgeting, including prior year balance (1x, Base)
 - Leverage external funding (1x, Base)
 - The new Budget Memo allocation formula benefitted underserved campuses such as CSUDH
 - The campus received funding for construction and operational needs



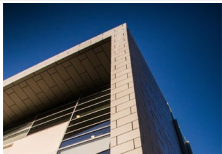
Division Carry-Forward Balances

- In the 2019-20 year divisions began implementing some of the cost saving measures outlined, resulting in increased carry-forward balances
- These carry-forward balances are typically utilized to fund one-time expenses that are not base funded i.e. professional development, operating expense

	2018 BBA	2019 BBA
ACADEMIC AFFAIRS - Division of Academic Affairs	\$ (1,374,349)	\$ 320,211
ADMIN AND FINANCE - Division of Admin and Finance	\$ 701,427	\$ 989,199
ADVANCEMENT - Division of Univ. Advancement	\$ 709,056	\$ 1,336,953
INFO TECHNOLOGY - Division of Info. Technology	\$ 478,189	\$ 1,173,066
PRESIDENTS - President	\$ 293,335	\$ 613,881
STUDENT AFFAIRS - Division of Student Affairs	\$ (60,319)	\$ 231,372
	\$ 747,339	\$ 4,664,682

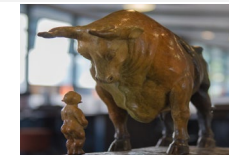


CARES ACT



CARES Act – Total Allocation

	Total Allocation	Minimum Allocation to be Awarded for Emergency Financial Aid Grants to Students	Institutional Portion	Minority Serving Institutions	Total Institutional Portion
CSUDH Allocation	\$ 18,481,277	\$ 9,240,639	\$ 9,240,638	\$ 1,301,802	\$ 10,542,440



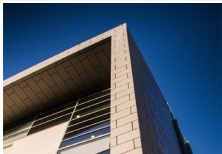
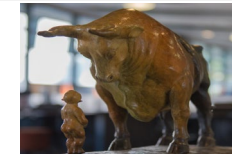
CARES Act Summary

CARES ACT / MSI ALLOCATION \$ 10,542,440

COVID-19 TASK	CARES ACT	FEMA
COVID-Related Purchasing Expenses (actuals incurred)		
Academic Affairs	117,232	
Administration & Finance	21,776	
Centrally Monitored	3,662	
Information Technology	86,678	
IRA	1,901	
Lottery	34,241	
Office of the President	7,742	
Spring Housing Refunds thru 6/30/2020	793,931	
Housing COVID expenses	24,570	
Spring Parking Refunds thru 6/30/2020	674,091	
Student Affairs	42,884	
University Advancement	1,492	
Academic Affairs		
Academic Affairs Conversion to Online Instruction-Spring 2020 to CM	1,667,513	
Summer Session Reimbursement to CEIE	642,419	
Faculty Development & Training	413,704	
Need-based student grants	150,000	
Rapid Inter-Library Loan and outdoor contactless lockers for Library	36,475	
Administration & Finance		
PPE	55,000	495,000
Supplies & Equipment		50,000
Information Technology		
IT personnel costs - campus support for online instruction/remote work	90,000	
Call Student Support	500,000	
Software/Hardware Needs	2,815,000	
Student Mobile Device Checkout (Reduced)	1,907,129	
TOTAL BUDGET	\$ 10,087,440	\$ 545,000

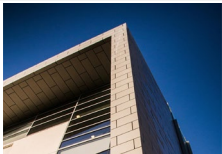
Unallocated remaining balance - may be used to off-set IT transformation initiatives \$ 455,000

Reimbursements to be held Centrally to cover campus shortfall \$ 2,452,683



Faculty Development & Training

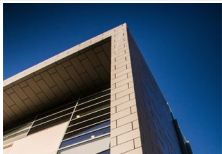
<u>Faculty Development & Training:</u>	\$413,704
Faculty professional development to train in online instruction	\$ 10,204
Online and hybrid teaching Boot Camp	\$ 391,500
Supplemental summer meetings of academic senate leadership	\$ 12,000



SAVE THE DATE: Future Budget Updates

- Monday, August 30th : Budget Lunch & Learn*- Budget Basics & OpenGov
- Monday, October 5th : Budget Lunch & Learn*- Understanding Campus Reserves and Fund Balances

*If you have any budget topics you would be interested in learning more about, please send them to Katie Robinson, University Budget Director (karobinson@csudh.edu).



CONTACT INFORMATION

Deborah Wallace

Vice President for Administration & Finance / Chief Financial Officer

dwallace@csudh.edu

Wayne Nishioka

Interim Associate Vice President, Business & Finance

wnishioka@csudh.edu

Katie Robinson

University Budget Director

karobinson@csudh.edu

